

META-EX Series

Zone 22

HIGH-BAY LED LIGHTING FIXTURES IN ALUMINIUM ALLOY

110.000h



	GAS			DUST		
ZONE	0	1	2	20	21	22
USABLE						X

META-EX is suitable for use in explosion hazardous areas according to ATEX directive 2014/34/EU. META-EX guarantees specific lighting and mechanical characteristics for installation in industrial environments, food industries and outdoor areas. The body is made of die-cast aluminium with anti-corrosion treatment, finished with a scratch-resistant powder coating. The diffuser, made of 4 mm extra-clear tempered glass, guarantees maximum resistance in harsh environments with chemical substances. Thanks to the different optics available in the catalogue (extra wide beam, narrow beam, elliptical beam and asymmetrical beam), the working areas can be illuminated in the best possible way, guaranteeing visual comfort and the best lighting performance.

Technical data sheets updated to new standards on palazzoli.com website

Compliance with standards
 Directive ATEX 2014/34/EU
 EN 60079-0
 EN 60079-31
 Directive 2014/35/EU
 EN 60598-1
 EN 60598-2-1
 EN 62471
 EN 62493
 IEC/TR 62778
 Directive 2014/30/EU
 EN 55015
 EN 61547
 EN 61000-3-2
 EN 61000-3-3
 Directive 2011/65/EU
 EN 50581

ATEX execution	II 3D Ex tc IIIC T100 °C Dc
Body material	Aluminium alloy
Surface treatment	Fluoro-zirconium treatment
Diffuser material	Extra clear tempered glass
Protection rating (IP according to IEC/EN 60529)	IP66/IP67
Paint	Hot-polymerised non-toxic polyester
Colour	RAL 9005
Impact resistance (IK rating according to IEC/EN 62262)	IK08
Corrosion class	C3 according to ISO 9223
Weight	9,5 Kg max
LED device efficiency	106 lm/W
Colour temperature	4000 K
CRI	≥ 80
Insulation class	I
Supply voltage	200-240 V
Operating frequency	50-60 Hz
Input surge protection EN 61000	10kV common mode 6 kV differential mode
Residual flicker	< 1%
Photobiological risk	Exempt
Glare index	UGR ≤ 22
Power factor	≥ 0,95
Max conductor cross-section	1,5 mm ²
Entry cable diameter	7-13 mm
Entry cable	ATEX cable gland M20
Estimated device lifetime	L80 B20 @110.000h Tq= -30 °C to +40 °C
Storage temperature	-40 °C - +70 °C
Operating temperature	-30 °C to +40 °C (up to +55 °C or other special configurations on request).



The photometric curves (LDT files) are available on www.palazzoli.com.



SUITABLE FOR ZONE 22 (DUST)

110.000h



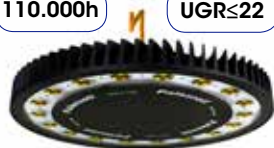
Suspension LED light fixtures
glass diffuser
roto-symmetrical
extra wide beam optics
IP66/IP67

Device power (W)	Rated flux (lm) Tj= 25 °C	Output flux (lm) Tq= 25 °C	Version	Photometric curves	Palazzoli code	Pack Qty
99	13230	10830	1-10 V dimmable standard	16	810090EX	1
133	17640	14439		16	810020EX	1
168	22050	18049		16	810050EX	1
199	26460	21659		16	810080EX	1

Equipment included: support for rapid pendant suspension.
Characteristics: typical height of installation between 5 and 9 meters.
Technical accessories: junction boxes in aluminium at page 21.
Note: the stated values may be subject to a +/- 7% tolerance.
 Other DALI or wireless control systems are available on request.

110.000h

UGR<22



Suspension LED light fixtures
glass diffuser
roto-symmetrical
narrow beam optics
IP66/IP67

Device power (W)	Rated flux (lm) Tj= 25 °C	Output flux (lm) Tq= 25 °C	Version	Photometric curves	Palazzoli code	Pack Qty
99	13230	10572	1-10 V dimmable standard	17	810091EX	1
133	17640	14096		17	810021EX	1
168	22050	17620		17	810051EX	1
199	26460	21144		17	810081EX	1

Equipment included: quick connection for suspension.
Features: typical installation height over 9 m.
Technical accessories: junction boxes in aluminium at page 21.
Notes: the stated values may be subject to a +/- 7% tolerance.
 Other DALI or wireless control systems are available on request.

110.000h

UGR<22



Suspension LED light fixtures
glass diffuser
elliptical beam optics
IP66/IP67

Device power (W)	Rated flux (lm) Tj= 25 °C	Output flux (lm) Tq= 25 °C	Version	Photometric curves	Palazzoli code	Pack Qty
99	13230	9965	1-10 V dimmable standard	18	810092EX	1
133	17640	13287		18	810022EX	1
168	22050	16609		18	810052EX	1
199	26460	19931		18	810082EX	1

Equipment included: connection with double chain bracket.
Features: suitable for installation between the aisles of industrial warehouses etc.
Technical accessories: junction boxes in aluminium at page 21.
Notes: the stated values may be subject to a +/- 7% tolerance.
 Other DALI or wireless control systems are available on request.

110.000h

UGR<22



LED floodlights
glass diffuser
asymmetrical optics
IP66/IP67

Device power (W)	Rated flux (lm) Tj= 25 °C	Output flux (lm) Tq= 25 °C	Version	Photometric curves	Palazzoli code	Pack Qty
99	13230	9193	1-10 V dimmable standard	19	810296EX	1
133	17640	12258		19	810226EX	1
168	22050	15322		19	810256EX	1
199	26460	18387		19	810286EX	1

Equipment included: adjustable bracket for wall-mounting or mounting on load-bearing structures (walls, poles, pylons).
Features: suitable for illuminating outdoor areas.
Technical accessories: junction boxes in aluminium at page 21.
Notes: the stated values may be subject to a +/- 7% tolerance. Other DALI or wireless control systems are available on request.



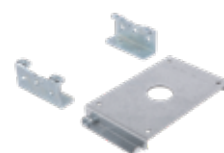
Pair of brackets
 for mounting on
 double chain and busbar

Manufacturing material	Palazzoli code	Pack Qty
galvanised steel	810997	1



0 - 90° adjustable bracket
 for mounting on double chain

Manufacturing material	Palazzoli code	Pack Qty
galvanised steel	810996	1



Kit with bracket
 for ceiling mounting

Manufacturing material	Palazzoli code	Pack Qty
galvanised steel	810998	1



0 - 90° adjustable bracket
 for mounting
 on catenary cable

Manufacturing material	Palazzoli code	Pack Qty
galvanised steel	810994	1